

## Explorer 7 New features.

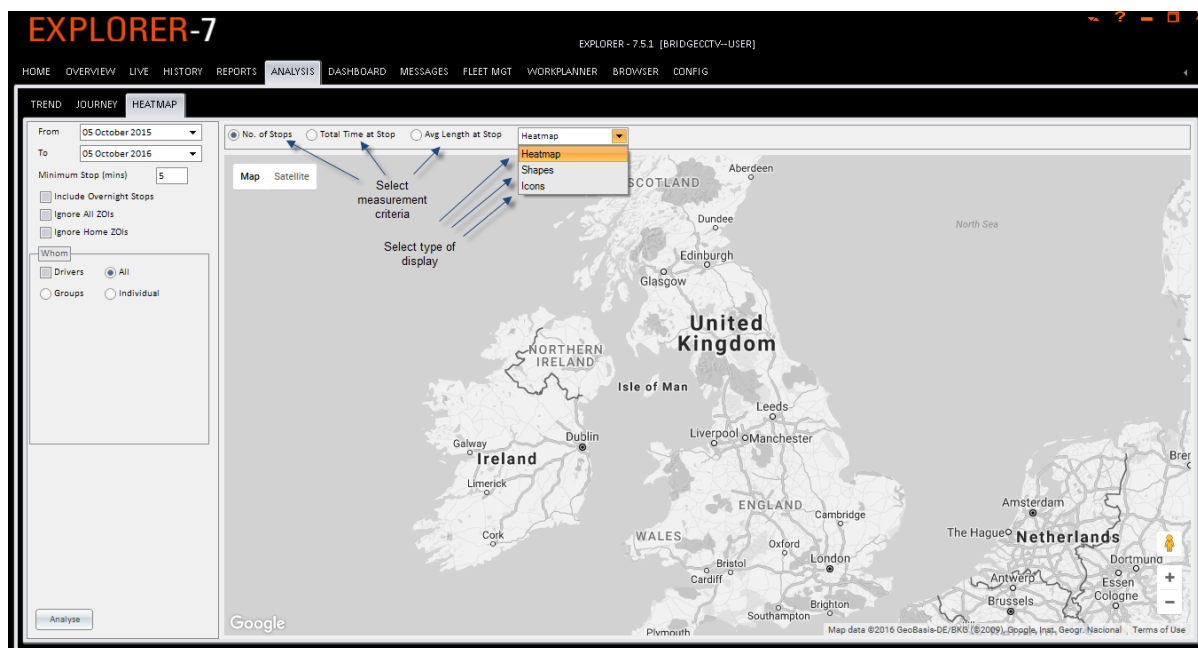
October 2016

As part of our product evolution we continue to enhance and improve the features within Explorer 7. In this document we discuss a new feature called **HEATMAPS**.

HEATMAPS allows you to analyse where your vehicles spend most of their time over any period in the past. This is a completely visual display that can be tailored and filtered for you to build your own heatmaps. Basically the darker the colour the greater the total time vehicles have spent at that location.

The default view is built using a count of the number of times a vehicle stops at a place, so for example a darker red area indicates more frequent visits than yellow and green. You are able to analyse data based on the total number of stops, total time spent at a stop or averaged times by clicking on the relevant criteria button. You can also change the display imagery.

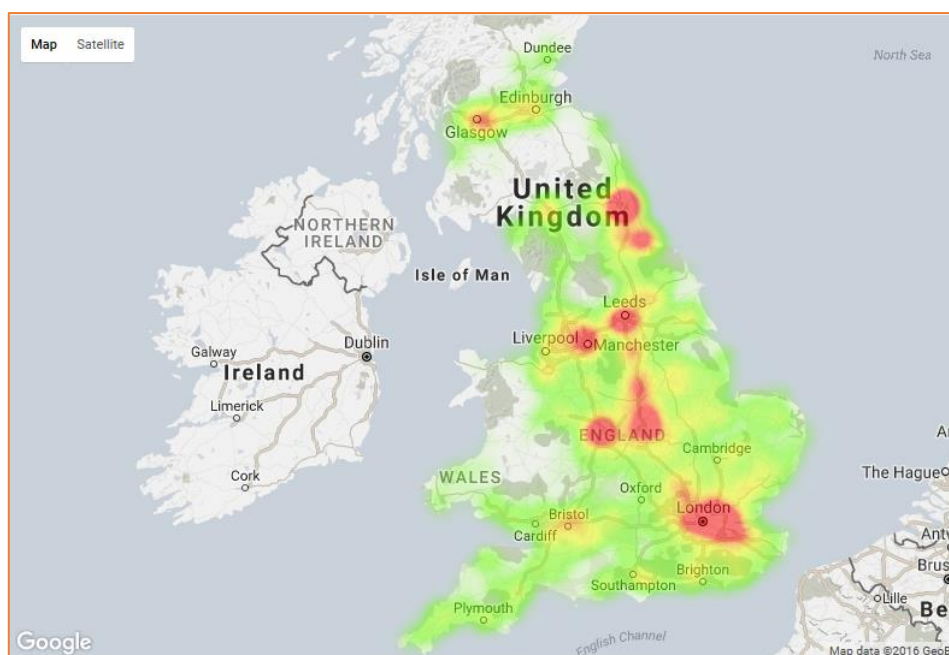
HEATMAPS are found by clicking the Analysis tab on the home screen and then the HEATMAP button...



To make use of the data you should set the parameters on the left hand side of the screen starting at the top and working your way down applying any criteria that is relevant to your needs.

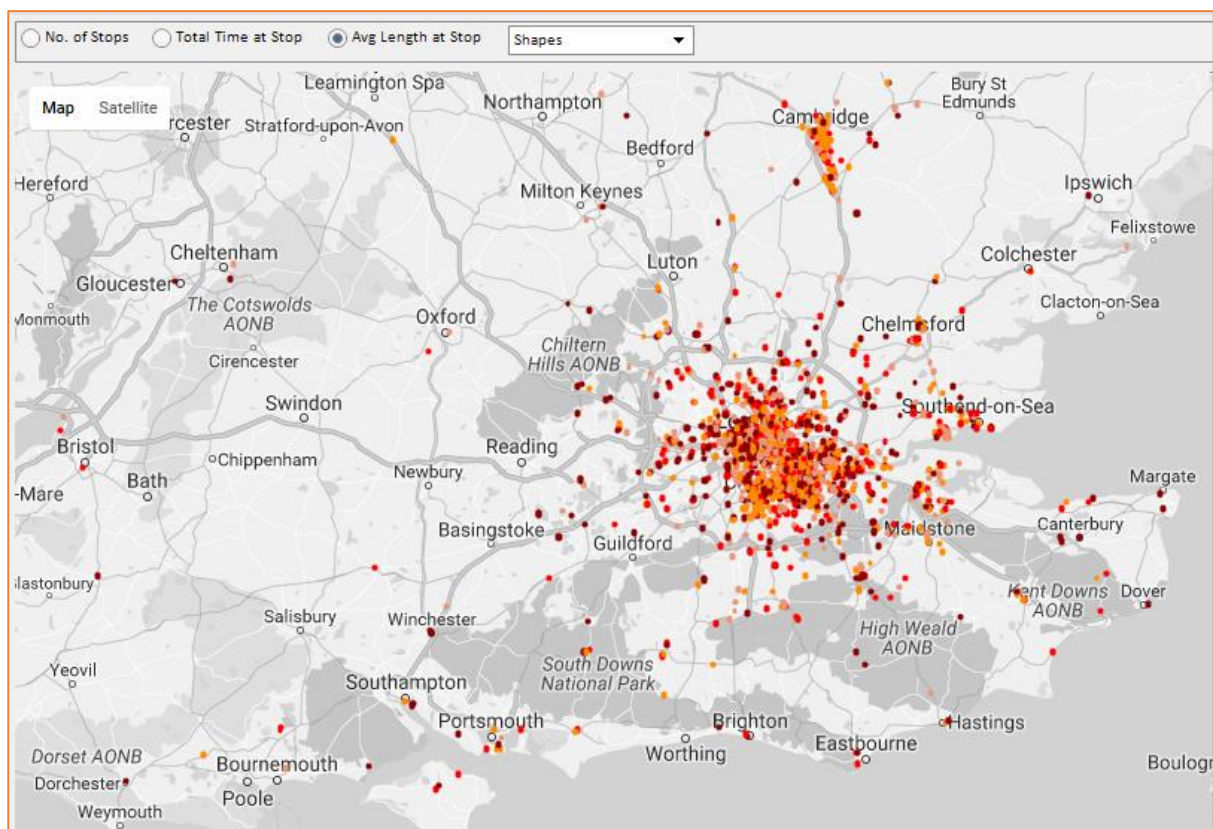
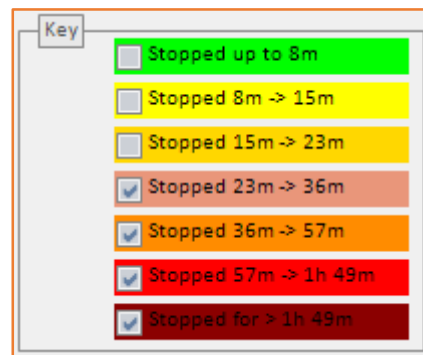
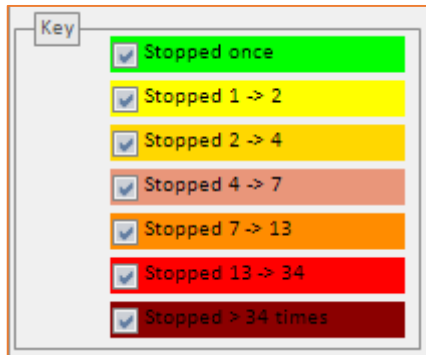
The screenshot shows a configuration panel for the 'HEATMAP' view. At the top, there are three tabs: 'TREND', 'JOURNEY', and 'HEATMAP', with 'HEATMAP' being the active tab. Below the tabs, there are two date pickers: 'From' set to '12 September 2015' and 'To' set to '12 September 2016'. A 'Minimum Stop (mins)' input field contains the number '5'. There are three unchecked checkboxes: 'Include Overnight Stops', 'Ignore All ZOIs', and 'Ignore Home ZOIs'. A 'Whom' section contains four radio button options: 'Drivers' (unchecked), 'All' (checked), 'Groups' (unchecked), and 'Individual' (unchecked). At the bottom of the panel is an 'Analyse' button.

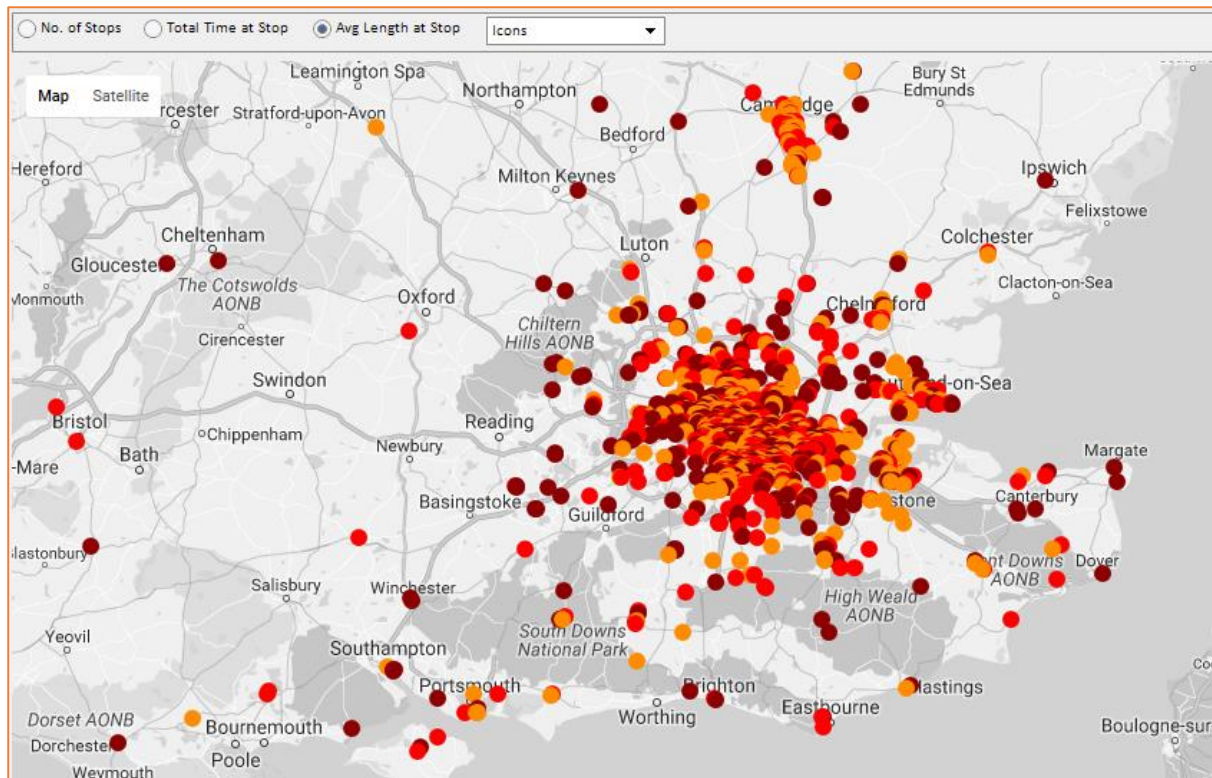
Once you have made your selections simply click Analyse and the system will build your heatmap, this can take a short while depending on what criteria you have entered, the length of time chosen and the number of vehicles involved.



The map will now show the areas that your vehicles have visited relevant to the criteria you have selected. The red areas are the most visited through to amber, yellow and varying shades of green, the lighter the colour the less frequent.

Different display options will also give you some other options based around time so you can manipulate what best suits the data you want to extract.





The information can be used to help prove the efficiency of your fleet, work out where most of your work is done, find out if vehicles from different groups are crossing over territories or boundaries and many other aspects of fleet management. As with all our software the best way to find out how this may help is to “play and experiment” and ask the system the questions you need the answers to.

Should you need any help or advice please do not hesitate to contact your Account Manager or Tech Support here at the office.

The Bridge Fleet Solutions Development Team