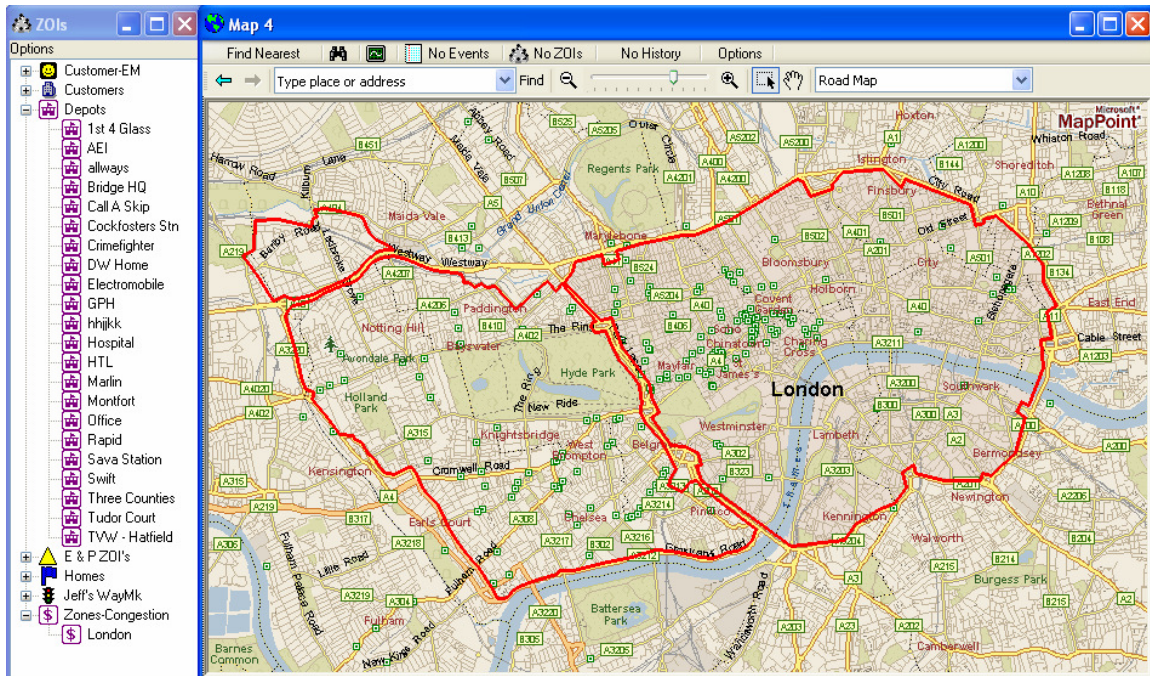




Web based Vehicle Tracking & Mobile Data Solutions

SAMPLE SCREEN DISPLAYS. "Zone of Interest."



- A ZOI is an area that you can place on the map. You have the option to be alerted when a vehicle enters or leaves the area. The ZOI area can be circular, rectangular or polygon depending on the requirements of the user.
- One of the system's standard ZOI's is the enlarged London Congestion Zone. This allows you to ensure that you are made aware of any vehicle entering the zone thereby ensuring that any fees are paid without incurring a fine.



Knowledge is Power - Efficiency is Revenue - Control is Profit

